


## 2-Pedal Overhung-Mount

600  
series


Pedal Material:	<b>Aluminum</b>
Ratio:	<b>Varies</b>
Weight:	<b>4.8 lbs (2.2 kg)</b>
P/N:	<b>72-608</b>

## Typical Applications


- Road Racing
- Endurance
- Off Road
- High Performance Street/Strip
- Circle Track
- Rally
- Drifting



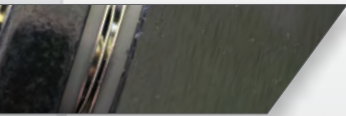
Forged aluminum pedals are engineered for high rigidity and low weight.



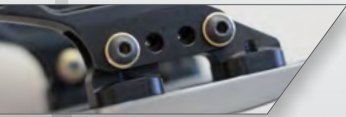
Lightweight aluminum frame features guide "ramps" to reduce balance bar tipping. By decreasing balance bar tipping, friction is decreased and brake repeatability is improved.



Large diameter 7/16"-20 balance bar, allowing front/rear brake bias adjustments, minimizes flex to provide a solid pedal feel/response. PTFE coated aluminum clevises for increased durability and reduced friction.



Pedal pivots feature wave washers to reduce lateral pedal movement and oil impregnated bronze bushings decrease stiction.



Foot pads can be adjusted vertically, horizontally and in angle to suit individual driver preferences. With two different pad sizes the customization is virtually endless.

## Optional Components

Master Cylinders	Page
76-Series Master Cylinders	81
75-Series Master Cylinder Kits	82
74-Series Master Cylinder Kits	83
73-Series Master Cylinders	84

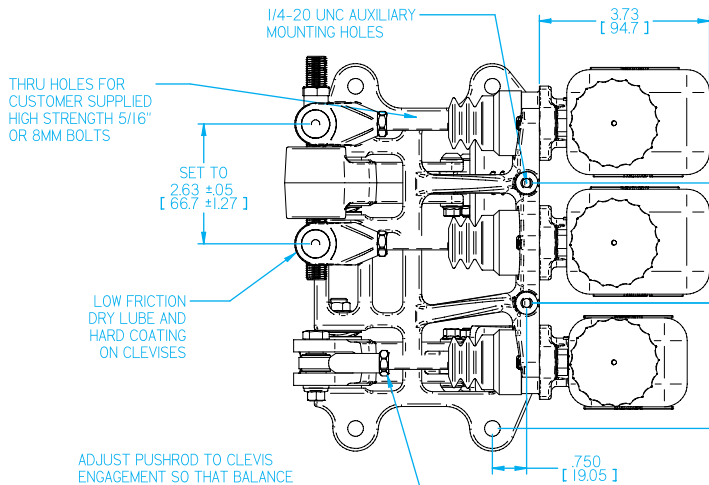
  

Accessories	Page
3-in-1 Plastic Reservoir	86
3-in-1 Billet Reservoir	87
Brake Bias Adjusters	88
Proportioning Valves	89
Flow Control Valve	89

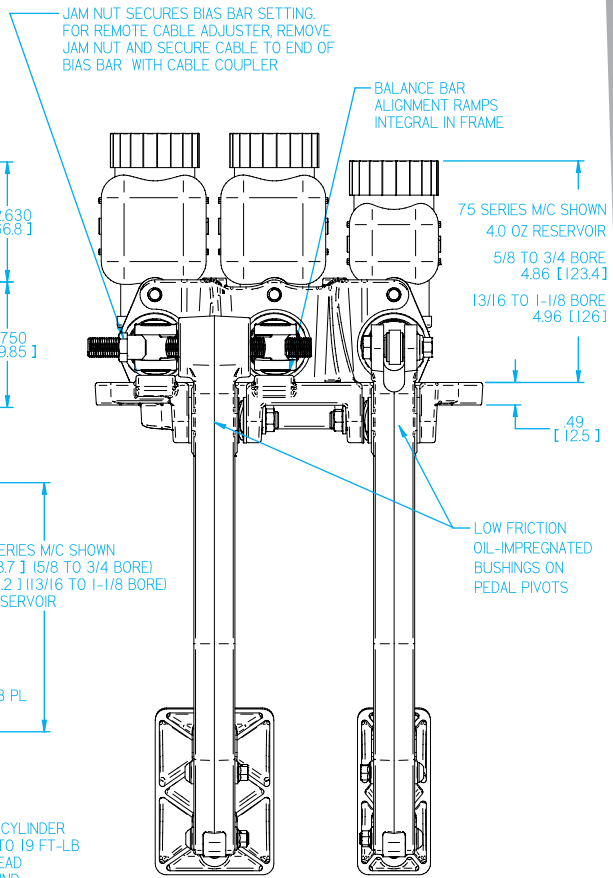
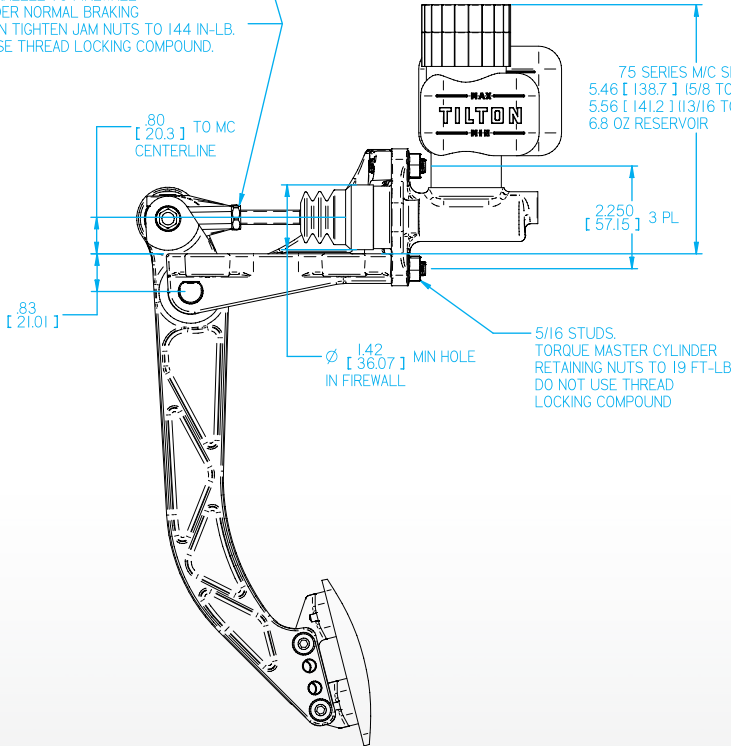
\* Does not include master cylinders

### Detailed Pedal Information

Pedal assemblies do not include master cylinders



ADJUST PUSHROD TO CLEVIS ENGAGEMENT SO THAT BALANCE BAR IS PARALLEL TO FIREWALL WHILE UNDER NORMAL BRAKING LOAD, THEN TIGHTEN JAM NUTS TO 144 IN-LB. DO NOT USE THREAD LOCKING COMPOUND.



PEDAL RATIO WILL VARY FROM 5.0:1 TO 6.2:1 BASED ON PEDAL PAD POSITION.

